

**S2646**



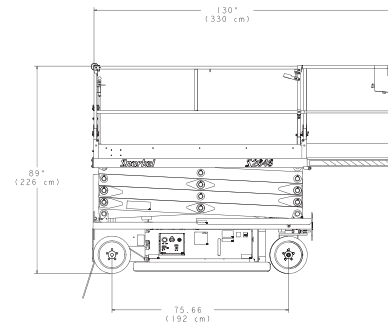
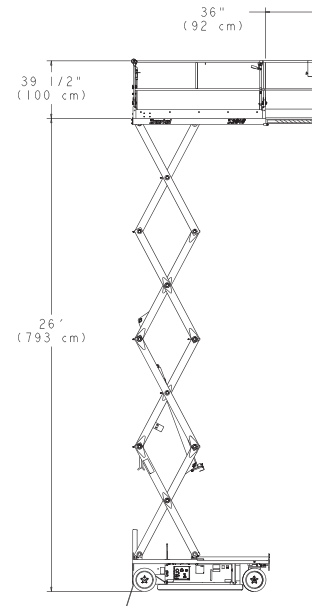
**Slab  
Scissor**

[www.snorkelusa.com](http://www.snorkelusa.com)

**Snorkel**

## Snorkel S2646

Platform	
Height.....	26' (7.93 m)
Size .....	45" x 94" (114.3 cm x 238.7 cm)
Rollout Extension .....	6" (91.4 cm)
Platform Length – extended.....	130" (330 cm)
Capacity .....	1,000 lbs. (454 kg)
Capacity on Rollout Extension .....	250 lbs. (113.3 kg)
Machine Dimensions	
Overall Stowed Height (to Guardrails).....	89" (226 cm)
Overall Stowed Height (Guardrails folded).....	61" (1.5 m)
Overall Length.....	96" (2.4 m)
Weight.....	5,200 lbs. (2,359 kg)
Ground clearance	
At machine center.....	4" (10.1 cm)
Pothole protection deployed.....	1" (2.5 cm)
Performance	
Tire size (Solid Rubber).....	16" x 5" (40.6 cm x 12.7 cm)
Gradeability.....	25%
Drive speed – Stowed.....	2 mph (3.2 km/h)
Drive speed – Raised.....	0.5 mph (0.8 km/h)
Electrical system.....	24 volts
Batteries.....	240 amp-hr
Charger.....	19 amp
Maximum drive height.....	26' (7.9 m)
Turning radius outside.....	101" (2.5 m)
Turning radius inside.....	10" (25.4 cm)



### Standard Features

- Pothole Protection System
- Level Sensor
- Joystick Control on removable console
- Two wheel parking brakes
- Driveable at full height
- Center pivot-type steering
- Fully proportioned drive/lift
- Dual wheel drive system
- Drive motion alarm
- Swing-out trays
- Non-marking tires
- Fork lift loadable from 3 sides
- 125 volt GFCI AC outlet at platform
- Fold down handrails

### Options

- Horn
- Flashing Light
- Battery Condition Indicator
- Lanyard Anchors
- Key Switch
- Swing Gate
- Maintenance free batteries

**DANGER:** Models described in this brochure are NON-INSULATED and do not provide electrocution protection from contact with or close proximity to energized conductors which is pointed out on decals and placards attached to the machine. Only qualified and trained operators are to be authorized to use and operate a work platform. Aerial work platforms must be elevated only on firm, level surface. Products in this brochure comply with applicable ANSI Standards. This literature is for illustrative purposes only. Consult Operating Maintenance and Parts Manuals for proper procedures. Specifications may vary and are subject to change without notice or obligation.

#### Manufacturing Plant

2009 Roseport Road  
 Elwood, Kansas 66024  
 800-255-0317  
 785-989-3000  
 785-989-3070 Fax

#### Australia

26 Redfern Road  
 Wetheril Park NSW  
 2164 Australia  
 (02) 9725 4000  
 (02) 9609 3057 Fax